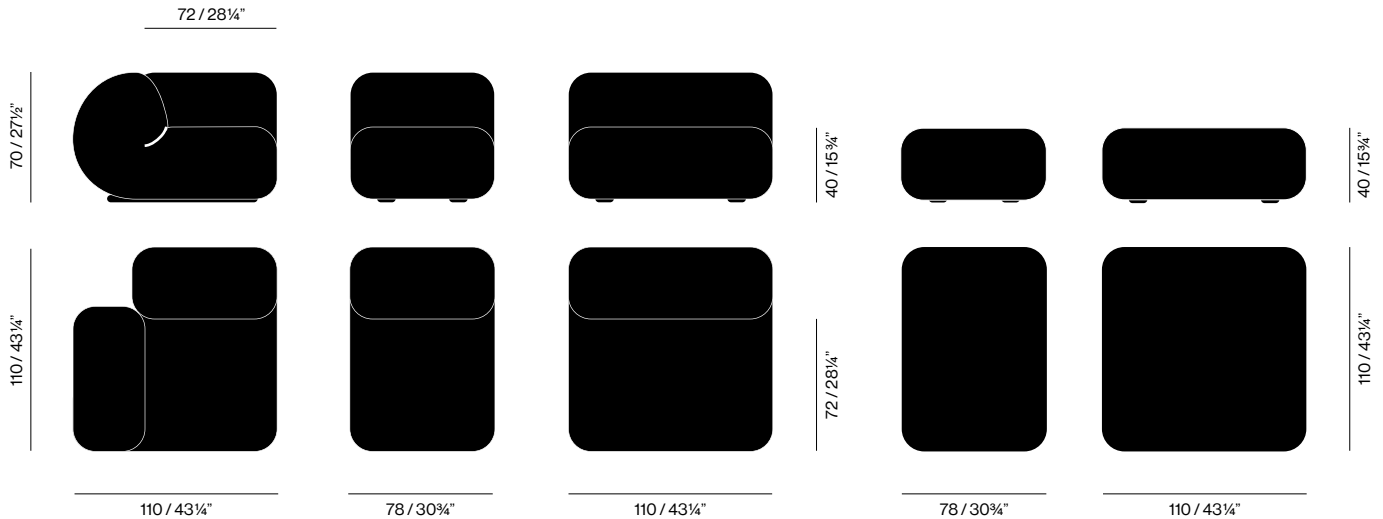


# DOBRA SOFA





## Dobra Sofa, 2021

Dobra ("Fold" in Portuguese) was created from a natural gesture: the folding of a soft material. In each piece, a strength that respects the foam's density is applied. It's as if a big cushion was curved and paused in time. This way, the piece, a frozen arc movement, sustains its possible return to the original position. The Dobra sofa is modular and allows different compositions with 5 modules variations. The original WE—KNIT® covering— made from recycled PET bottles — combines a tactile experience, with high resistance and sustainability.

PRODUCT TYPE: Modular Sofa

ENVIRONMENT: Indoor

MATERIALS: Wood, Upholstery

DIMENSIONS / NET WEIGHT

MODULE CORNER

W: 110cm / 43¼"  
 D: 110cm / 43¼"  
 H: 70cm / 27½"  
 Seat height: 40cm / 15¾"  
 43 kg / 95 lbs

MODULE SMALL

W: 78cm / 30¾"  
 D: 110cm / 43¼"  
 H: 70cm / 27½"  
 Seat height: 40cm / 15¾"  
 30 kg / 66 lbs

MODULE LARGE

W: 110cm / 43¼"  
 D: 110cm / 43¼"  
 H: 70cm / 27½"  
 Seat height: 40cm / 15¾"  
 43 kg / 95 lbs

POUF SMALL

W: 78cm / 30¾"  
 D: 110cm / 43¼"  
 H: 40cm / 15¾"  
 22 kg / 49 lbs

POUF LARGE

W: 110cm / 43¼"  
 D: 110cm / 43¼"  
 H: 40cm / 15¾"  
 25 kg / 55 lbs

COLORS

See below exclusive WE—KNIT® coverings for WENTZ upholstered products.

TECHNICAL DESCRIPTION

Modular sofa with wood structure, elastic straps, hypersoft foam and WE—KNIT® covering. Base in black painted wood and EVA bottom finishing to avoid the modules to slide appart.

CERTIFICATES

US California Tech. Bull. 117

PACKAGING / GROSS WEIGHT

MODULE CORNER  
 115 x 115 x 80cm / 45" x 45" x 31"  
 93 kg / 205 lbs

MODULE SMALL

83 x 115 x 80cm / 33" x 45" x 31"  
 70 kg / 154 lbs

MODULE LARGE

115 x 115 x 80cm / 45" x 45" x 31"  
 93 kg / 205 lbs

POUF SMALL

83 x 115 x 50cm / 33" x 45" x 20"  
 48 kg / 106 lbs

POUF LARGE

115 x 115 x 50cm / 45" x 45" x 20"  
 57 kg / 126 lbs

MODULES

---



DB03  
DOBRA SOFA — MODULE CORNER



DB01  
DOBRA SOFA — MODULE SMALL



DB02  
DOBRA SOFA — MODULE LARGE



DB11  
POUF SMALL



DB12  
POUF LARGE



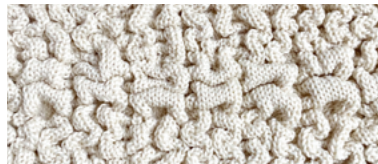
WE—KNIT® 002

COMPOSITION  
70% Recycled PET + 30% Elastane

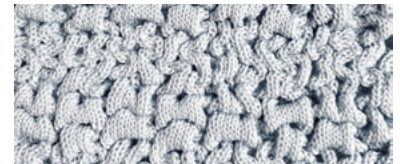
ABRASION RESISTANCE  
100.000 Martindale  
Mesh wire pulling: 5 (ISO 1–5)  
Colorfastness: 5 (ISO 1–5)

LIGHT RESISTANCE  
Lightfastness: 5 (ISO 1–5)

FLAME RESISTANCE  
US California Tech. Bull. 117



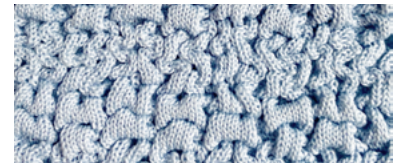
002.02  
OFF-WHITE



002.13  
COOL GREY



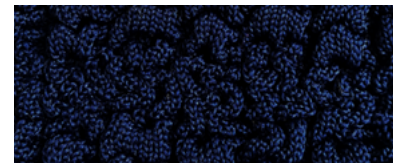
002.03  
SAND



002.12  
LIGHT BLUE



002.05  
CHESTNUT



002.11  
NAVY BLUE



002.07  
CLAY



002.18  
OFF BLACK

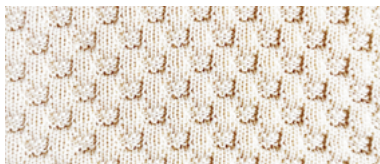
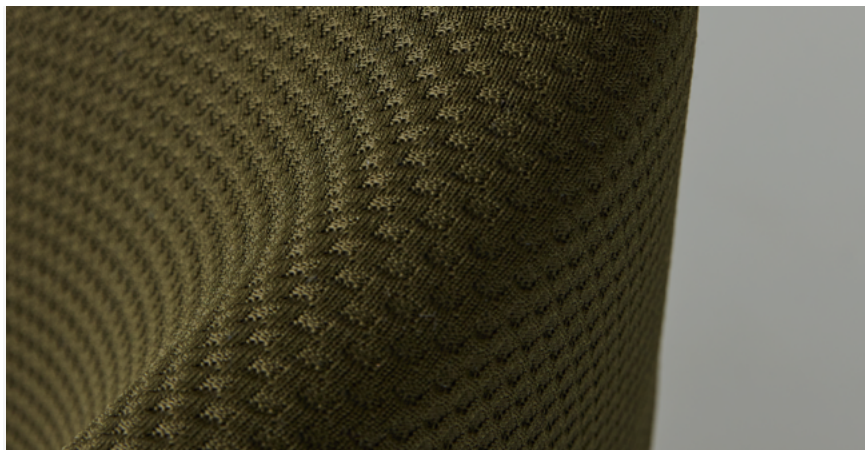
WE—KNIT® 001

COMPOSITION  
100% Recycled PET

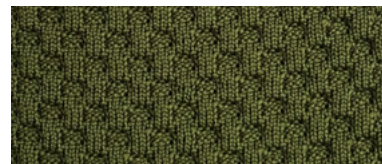
ABRASION RESISTANCE  
100.000 Martindale  
Mesh wire pulling: 5 (ISO 1–5)  
Colorfastness: 5 (ISO 1–5)

LIGHT RESISTANCE  
Lightfastness: 5 (ISO 1–5)

FLAME RESISTANCE  
US California Tech. Bull. 117



001.02  
OFF-WHITE



001.10  
MOSS GREEN



001.03  
SAND



001.13  
COOL GREEN



001.05  
CHESTNUT



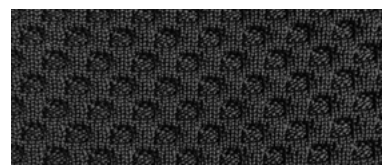
001.12  
LIGHT BLUE



001.07  
CLAY



001.11  
NAVY BLUE



001.18  
OFF BLACK



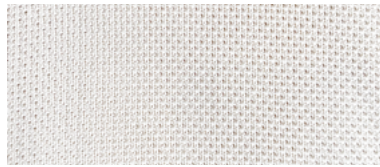
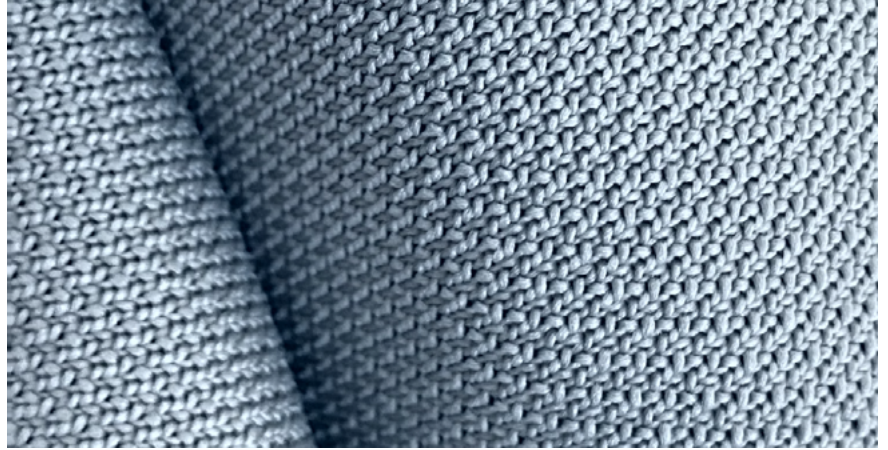
WE—KNIT® 003

COMPOSITION  
100% Recycled PET

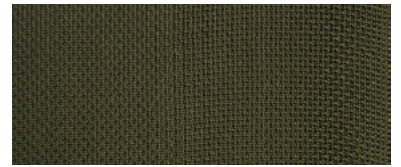
ABRASION RESISTANCE  
100.000 Martindale  
Mesh wire pulling: 4 (ISO 1–5)  
Colorfastness: 5 (ISO 1–5)

LIGHT RESISTANCE  
Lightfastness: 5 (ISO 1–5)

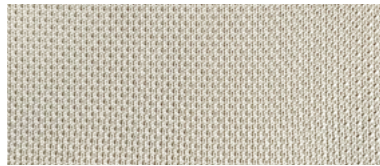
FLAME RESISTANCE  
US California Tech. Bull. 117



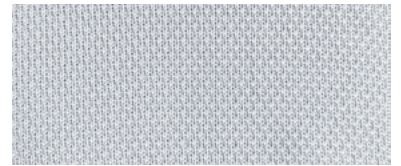
003.02  
OFF-WHITE



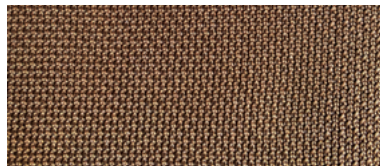
003.10  
MOSS GREEN



003.03  
SAND



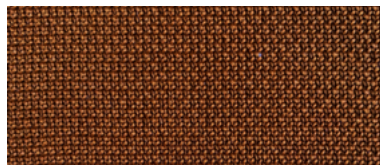
003.13  
COOL GREY



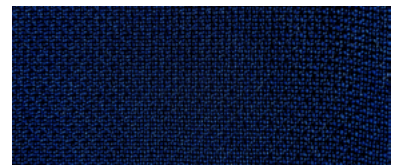
003.05  
CHESTNUT



003.12  
LIGHT BLUE



003.07  
CLAY



003.11  
NAVY BLUE



003.18  
OFF BLACK

WE—KNIT® 004

COMPOSITION  
100% Recycled PET

ABRASION RESISTANCE  
100.000 Martindale  
Mesh wire pulling: 4 (ISO 1–5)  
Colorfastness: 5 (ISO 1–5)

LIGHT RESISTANCE  
Lightfastness: 5 (ISO 1–5)

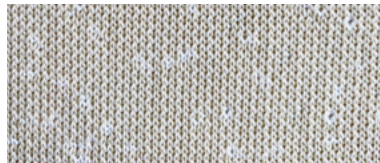
FLAME RESISTANCE  
US California Tech. Bull. 117



004.02  
JACQUARD OFF WHITE



004.01  
JACQUARD WHITE



004.03  
JACQUARD SAND



004.04  
JACQUARD GREY



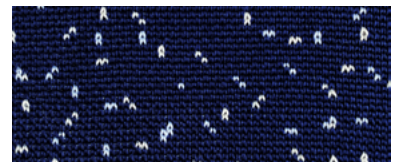
004.05  
JACQUARD CHESTNUT



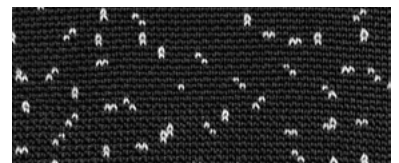
004.10  
JACQUARD MOSS GREEN



004.07  
JACQUARD CLAY



004.11  
JACQUARD NAVY BLUE



004.18  
JACQUARD OFF BLACK



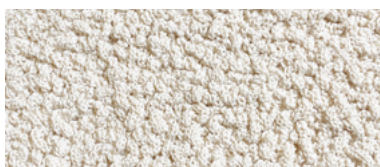
WE—KNIT® 005

COMPOSITION  
70% Recycled PET + 30% Elastane

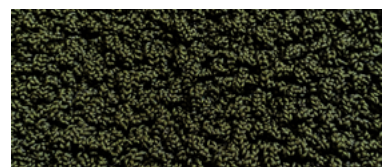
ABRASION RESISTANCE  
100.000 Martindale  
Mesh wire pulling: 4 (ISO 1–5)  
Colorfastness: 5 (ISO 1–5)

LIGHT RESISTANCE  
Lightfastness: 5 (ISO 1–5)

FLAME RESISTANCE  
US California Tech. Bull. 117



005.02  
OFF-WHITE



005.10  
MOSS GREEN



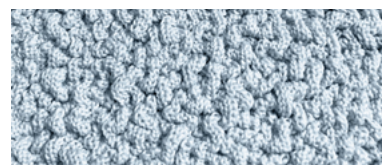
005.03  
SAND



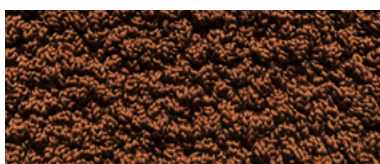
005.13  
COOL GREY



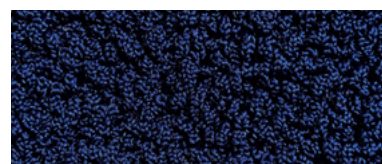
005.05  
CHESTNUT



005.12  
LIGHT BLUE



005.07  
CLAY



005.11  
NAVY BLUE



005.18  
OFF-BLACK